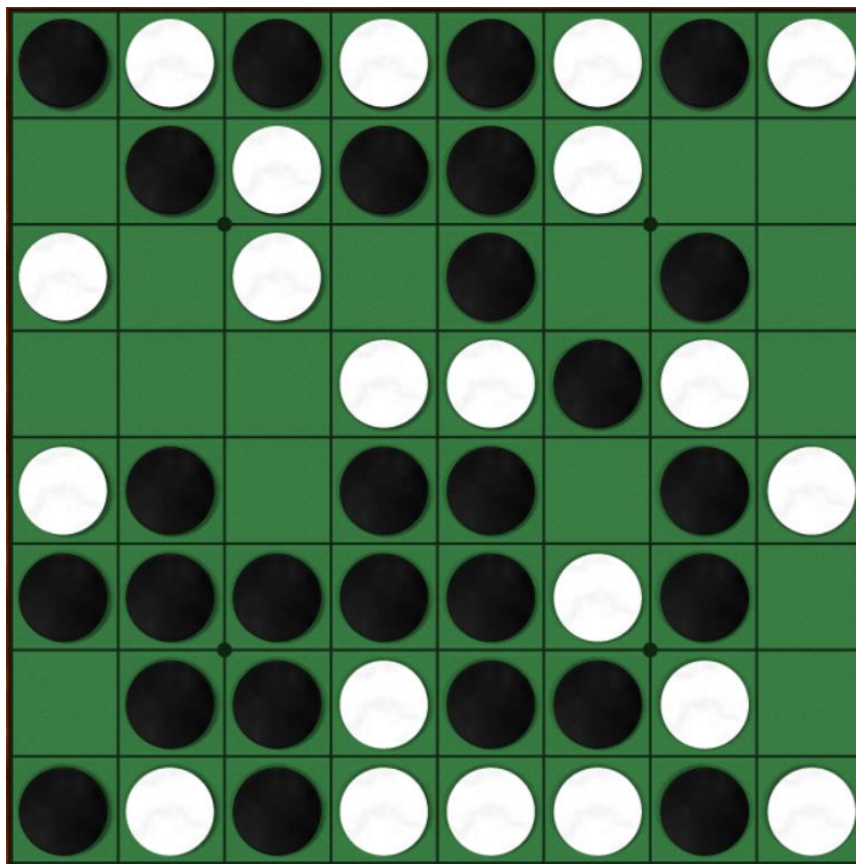


Overseeing

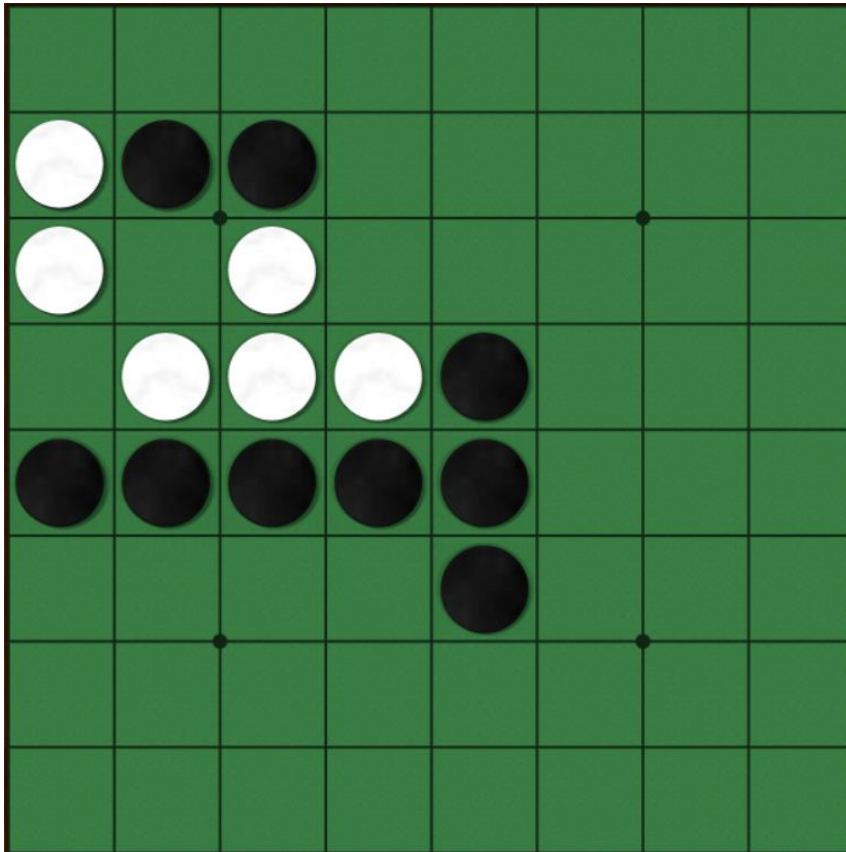
Eleanor has challenged Rachel to oversee a few Othello games. But it is hard to keep an eye on all the discs, and things can get flipped in an instant.

In this Othello game, the discs on the board had been shuffled around. But you are still determined to finish the game from this position anyway. At the end of the game, note the other changes, in the given board order, to figure out what to do.

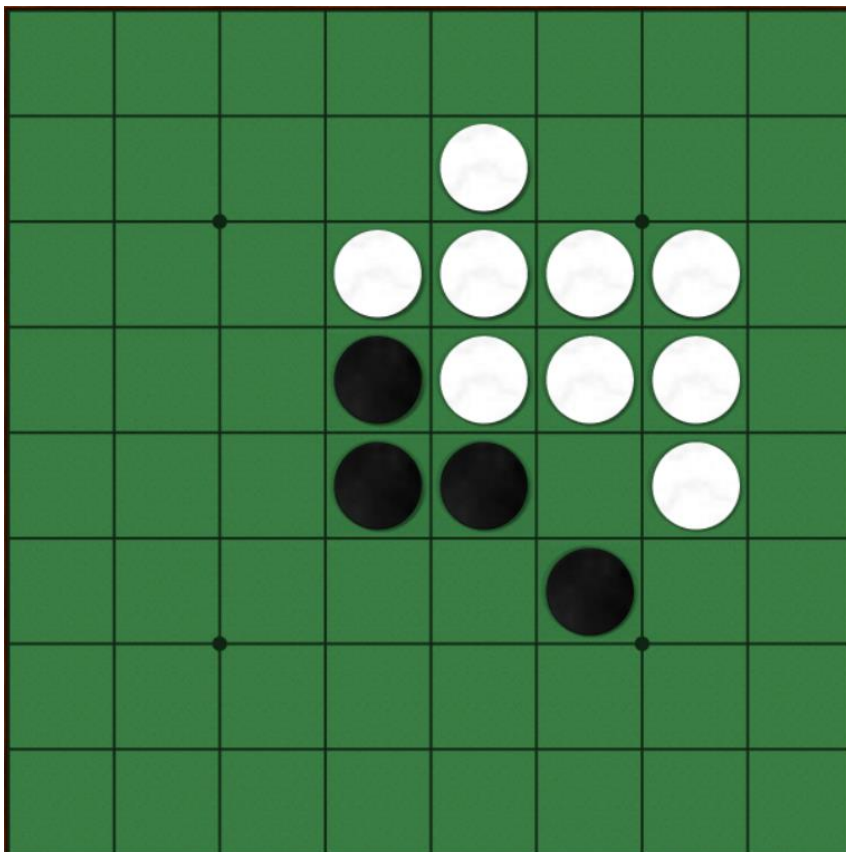


Side that moves first
in Othello

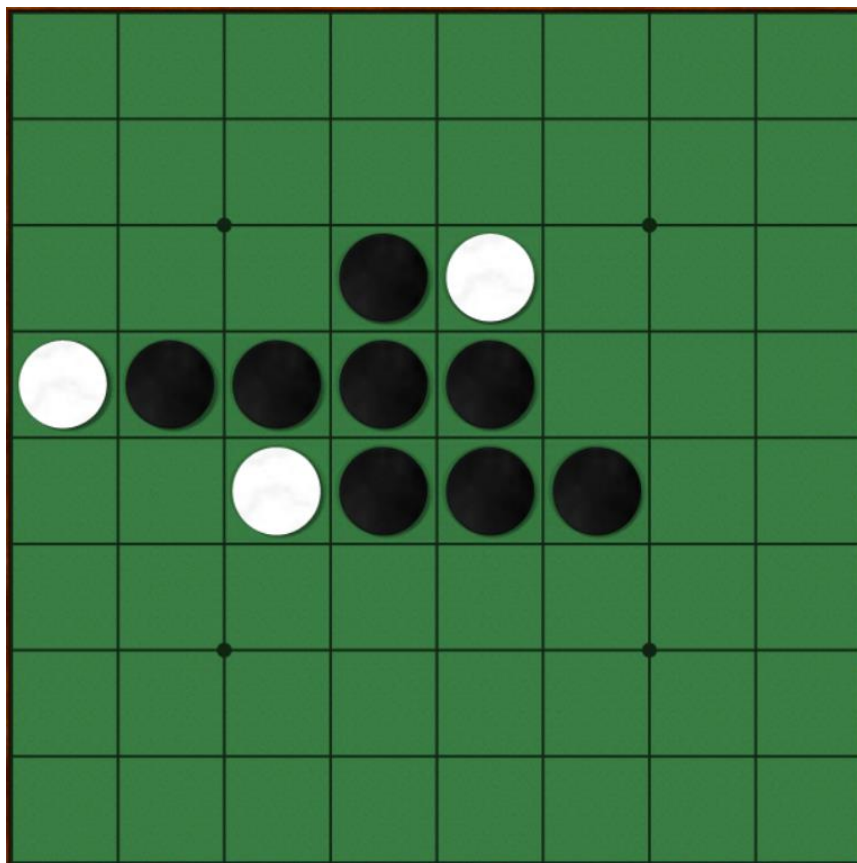
In each of the Othello positions on the following pages, figure out which one of the discs had been duplicitously flipped over. You can assume that these were proper Othello games and that neither player had skipped a turn.



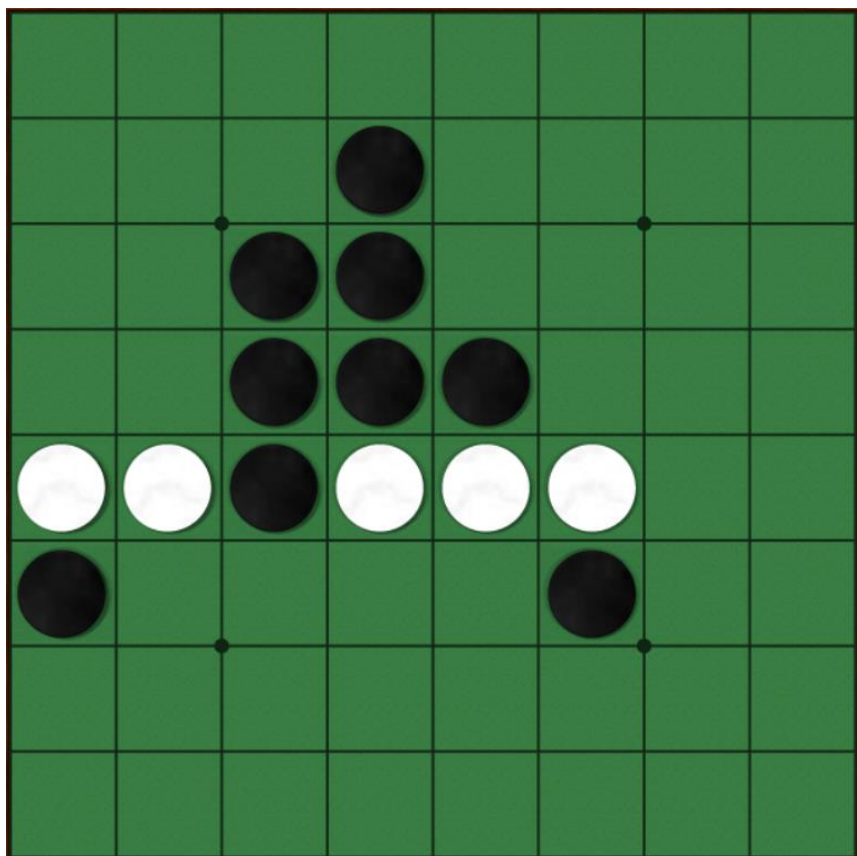
Lead role in Noh play



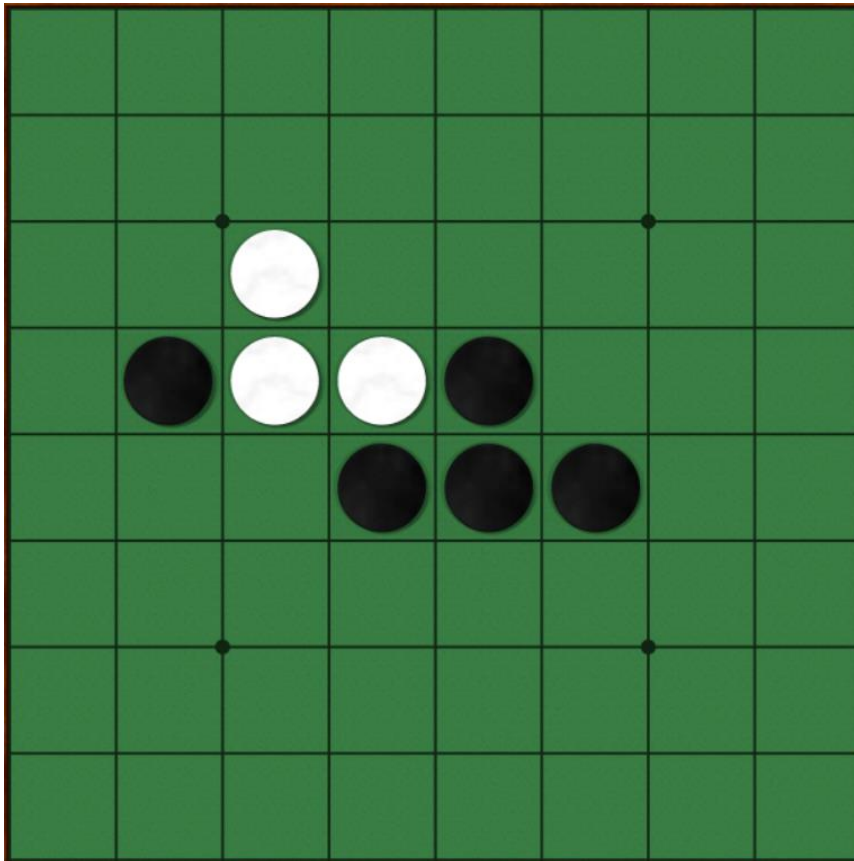
Wheel stopper wedge



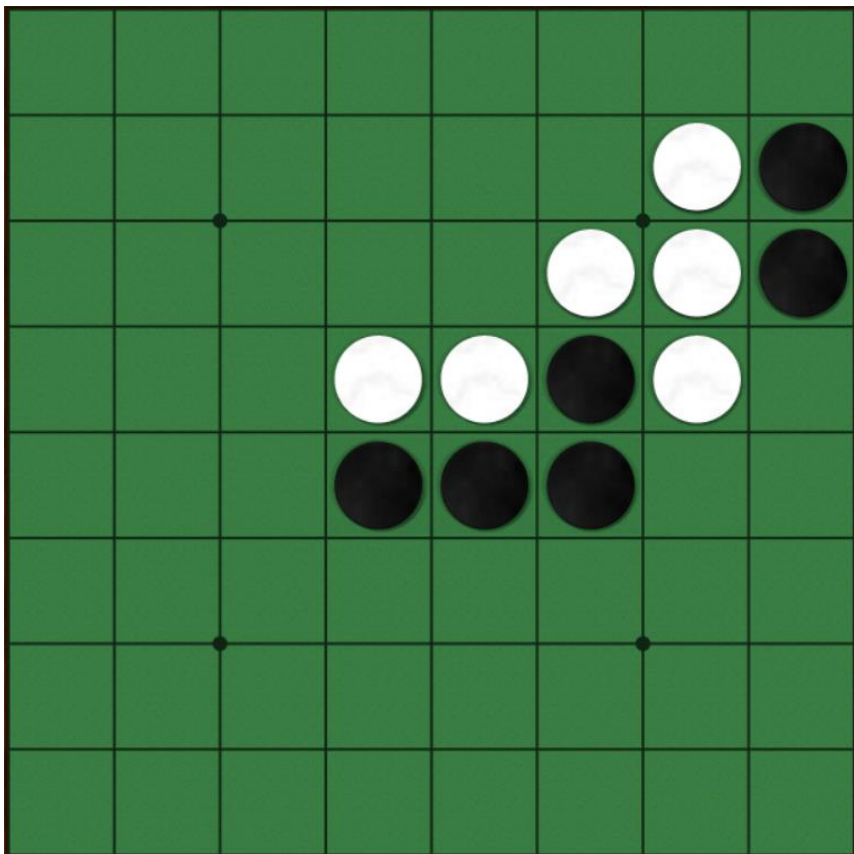
Hen's sound



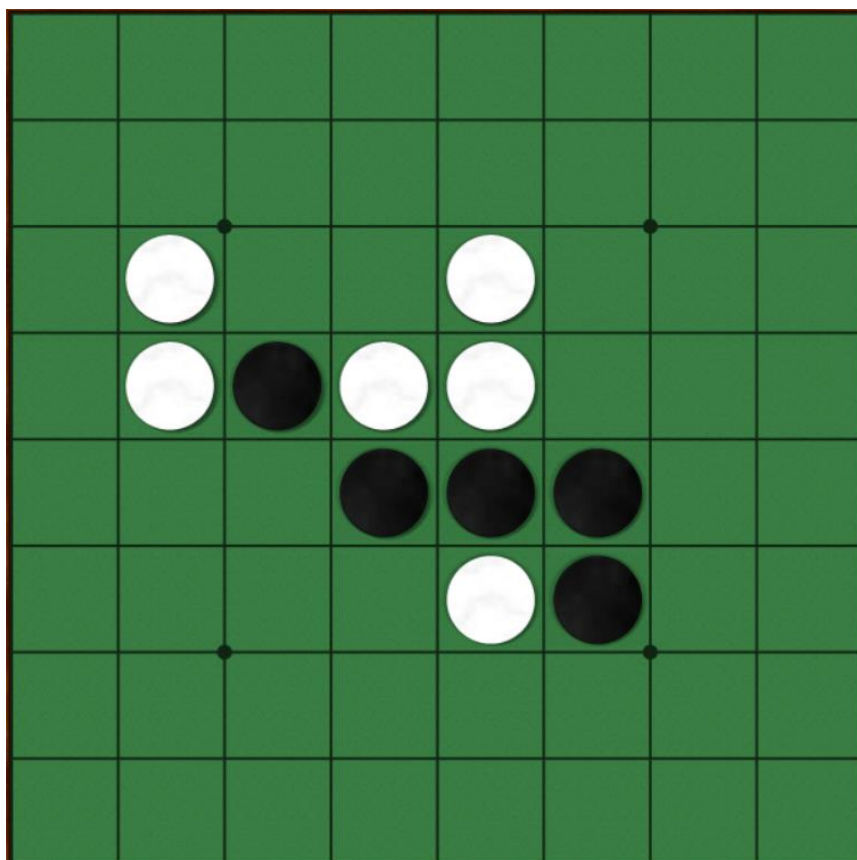
Timepiece



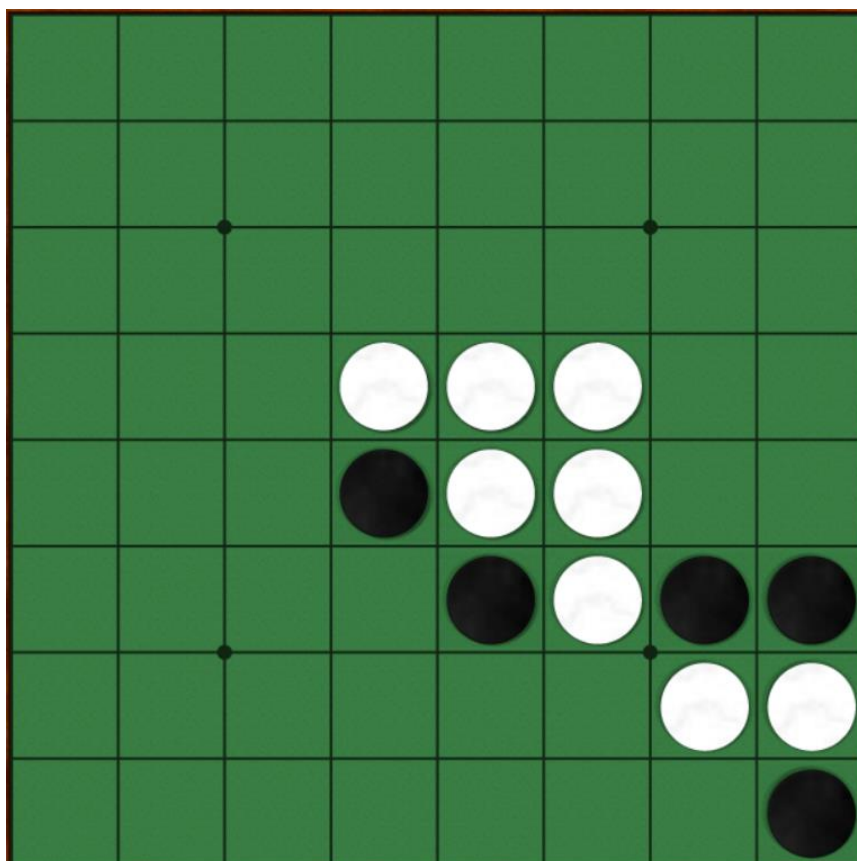
Throw quickly



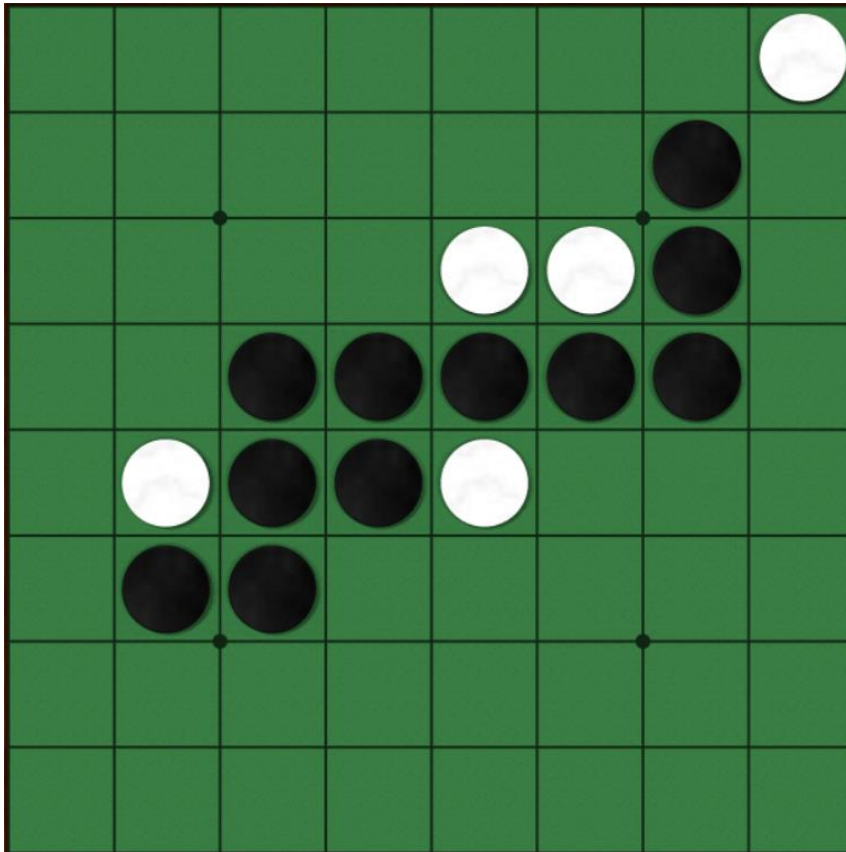
Nickname for Sea
Harriers



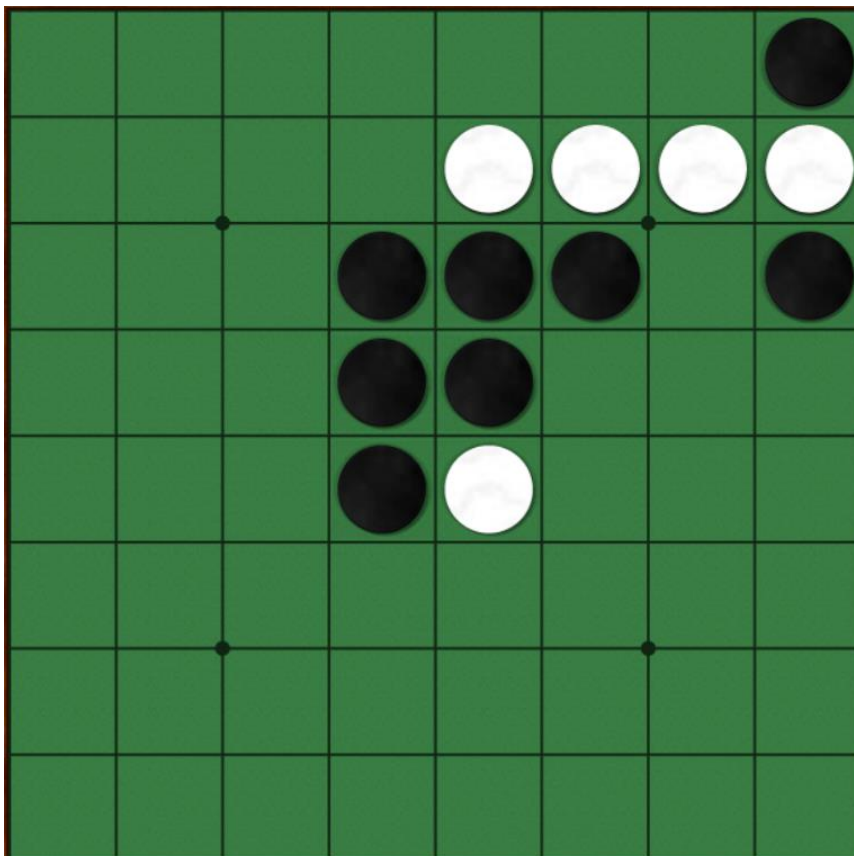
Dilapidated hut



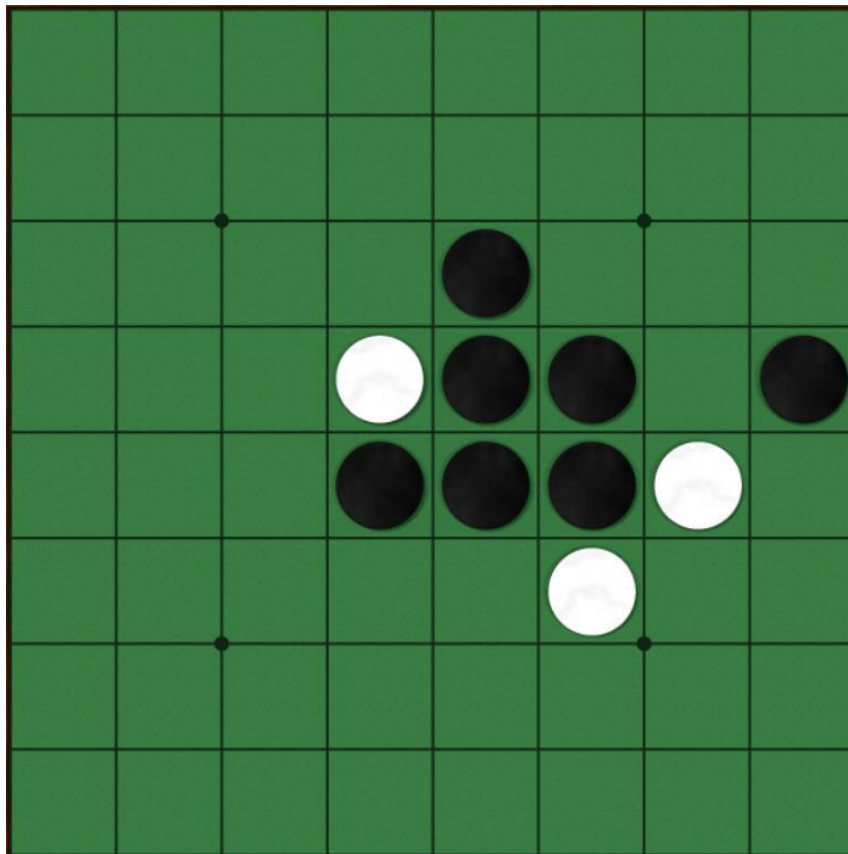
A close one



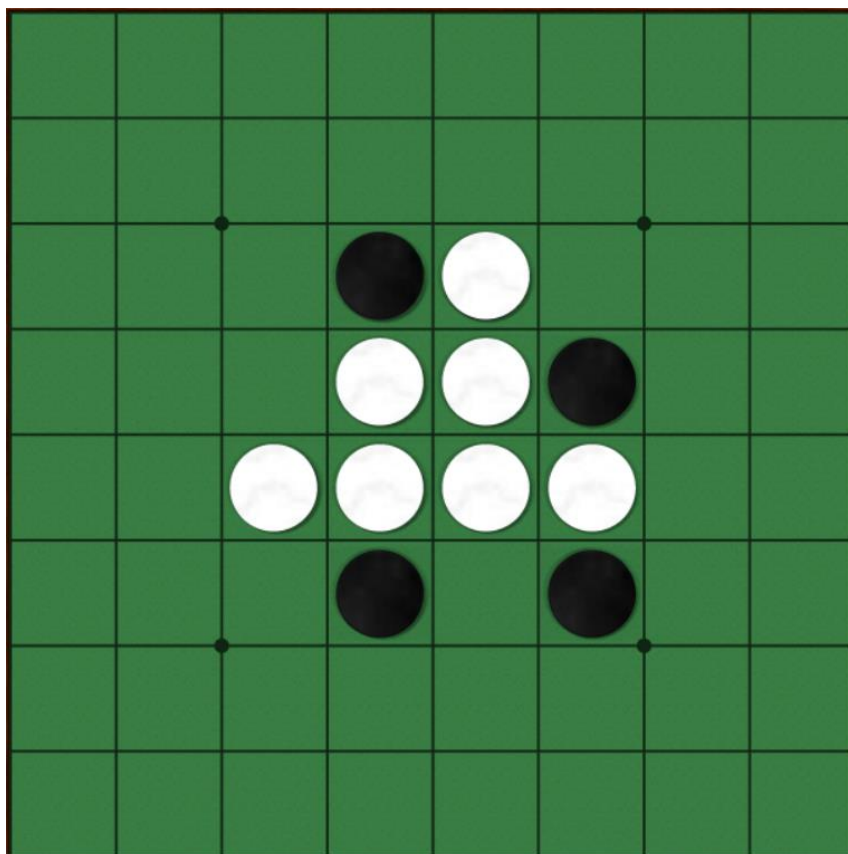
Feeling of humiliation



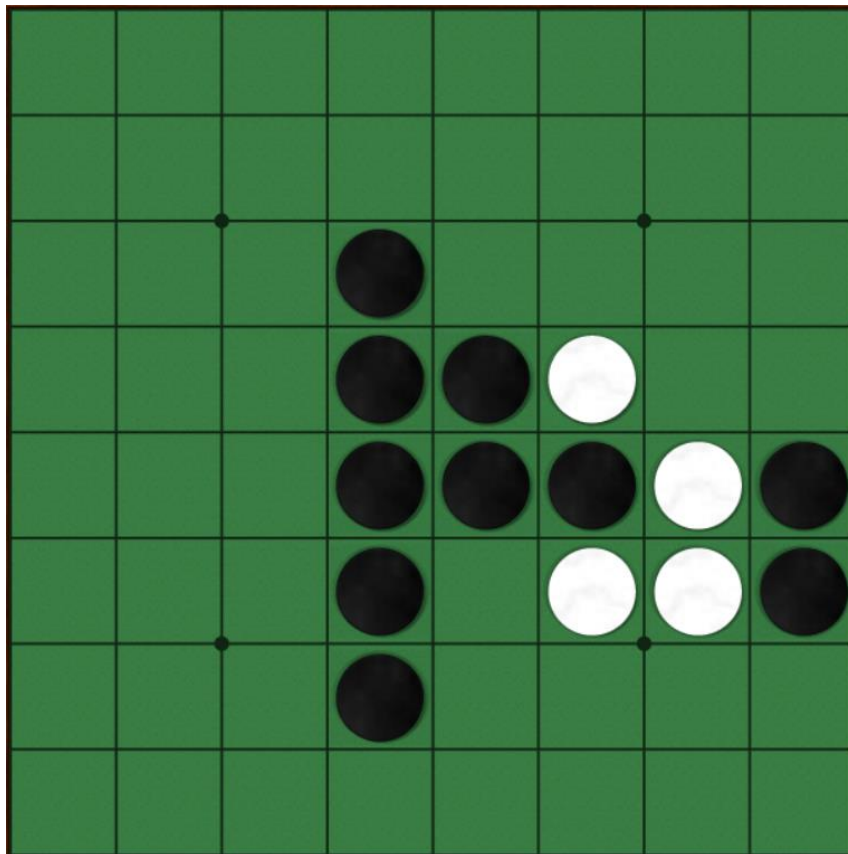
Pretences



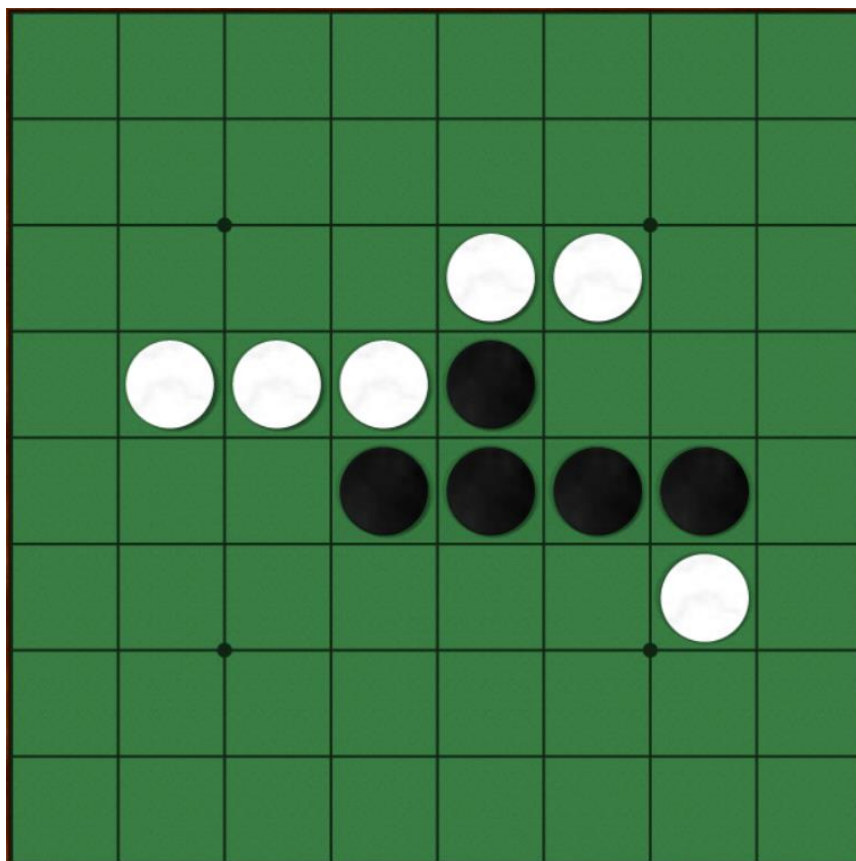
Wide cork or wooden
bung



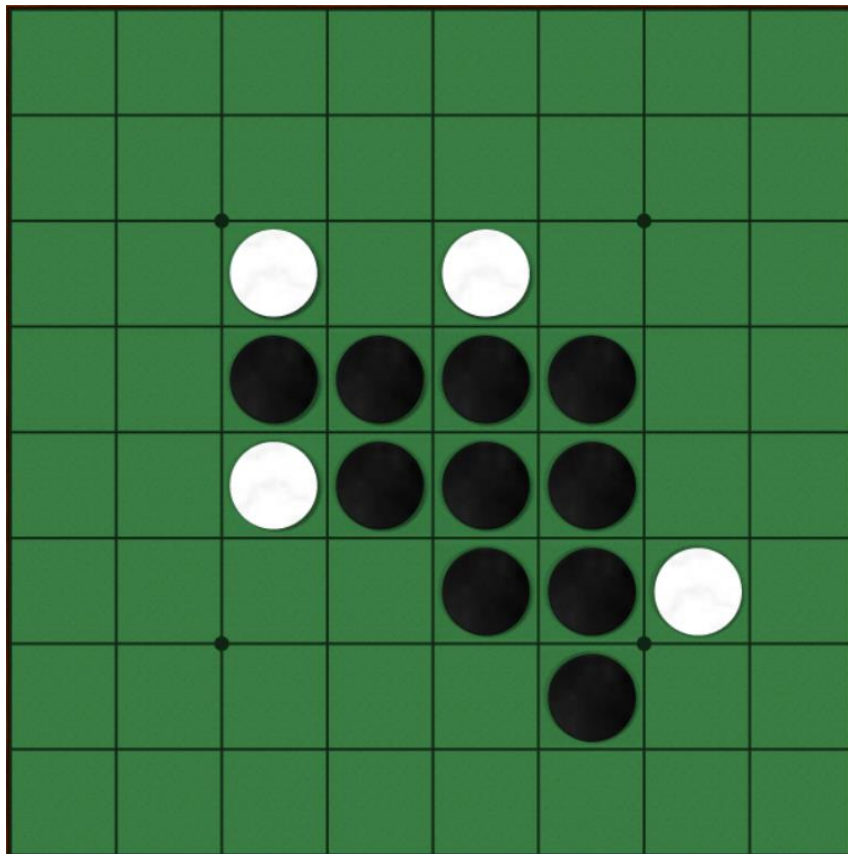
Pottery or glass
fragment



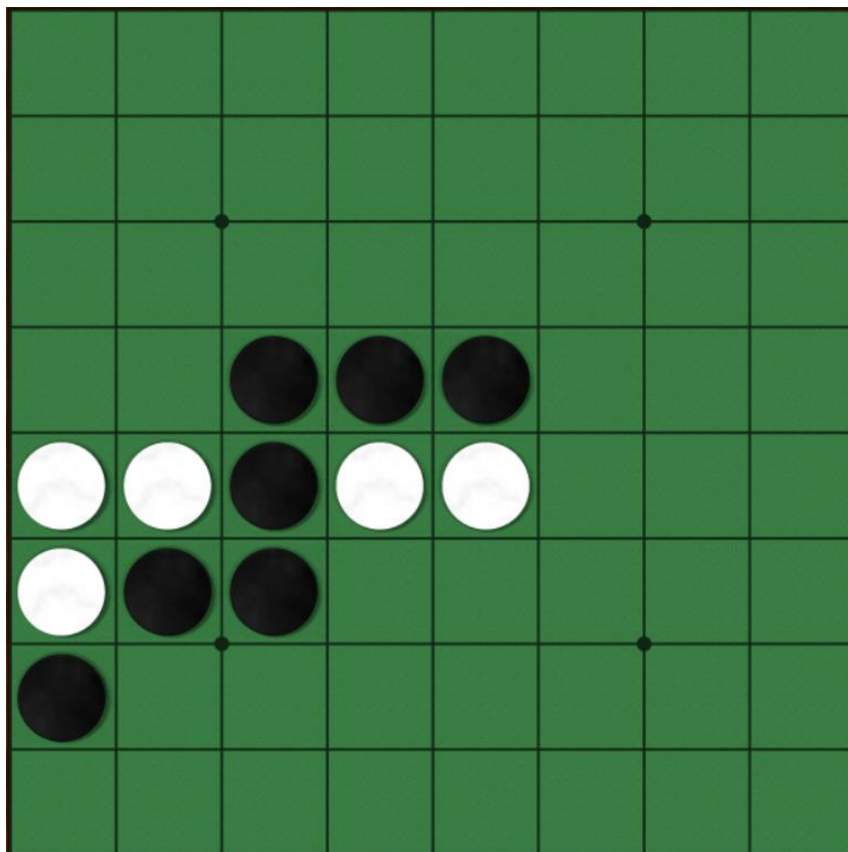
A pool expert



Obstruct, clog



Caucasian



Violent surprise